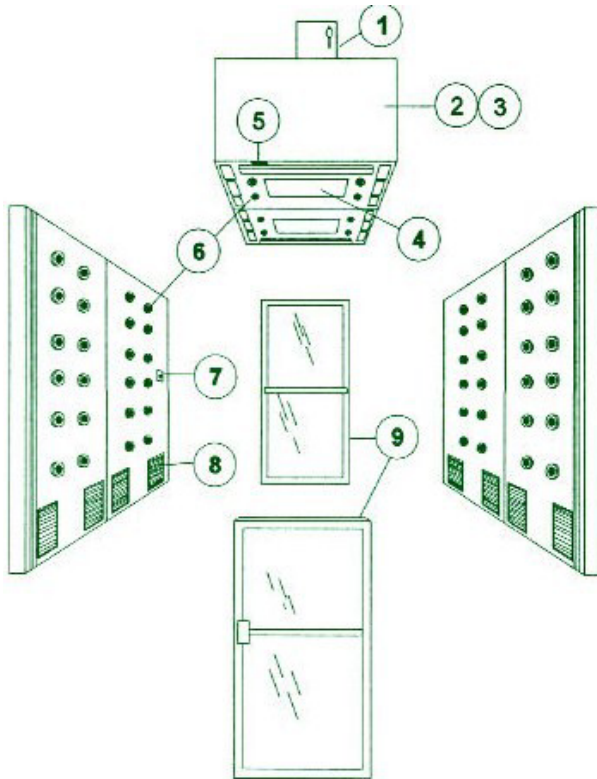
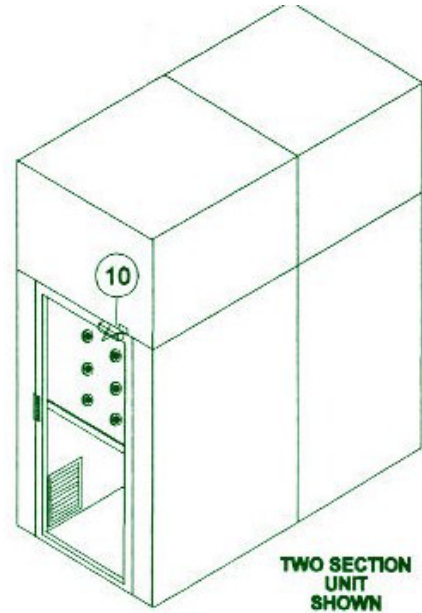


“TN” TUNNEL AIR SHOWER



EXPLODED VIEW



ISOMETRIC VIEW

LEGEND

- | | | | |
|----|---------------------------|-----|---|
| 1. | POWER PANEL | 7. | EMERGENCY STOP/RESET SWITCH |
| 2. | DIRECT DRIVE BLOWER | 8. | RETURN AIR GRILLE WITH PRE-FILTER |
| 3. | 99.99% HEPA FILTER | 9. | CLEAR ANODIZED ALUMINUM DOOR FRAME WITH 1/4" CLEAR TEMPERED GLASS |
| 4. | FLUORESCENT LIGHT FIXTURE | 10. | DOOR CLOSERS |
| 5. | DOOR SENSORS & LOCKS | | |
| 6. | AIR NOZZLES | | |



www.airshower.com
AIR SHOWERS & PASS THRUS UNLTD, INC
 Designers & Manufacturers
 PO Box 427 Rancho Cucamonga, CA 91729-0427
 (800) 913-0054 Fax: (909) 483-1801

MODEL LP AIR SHOWER TABULAR DATA

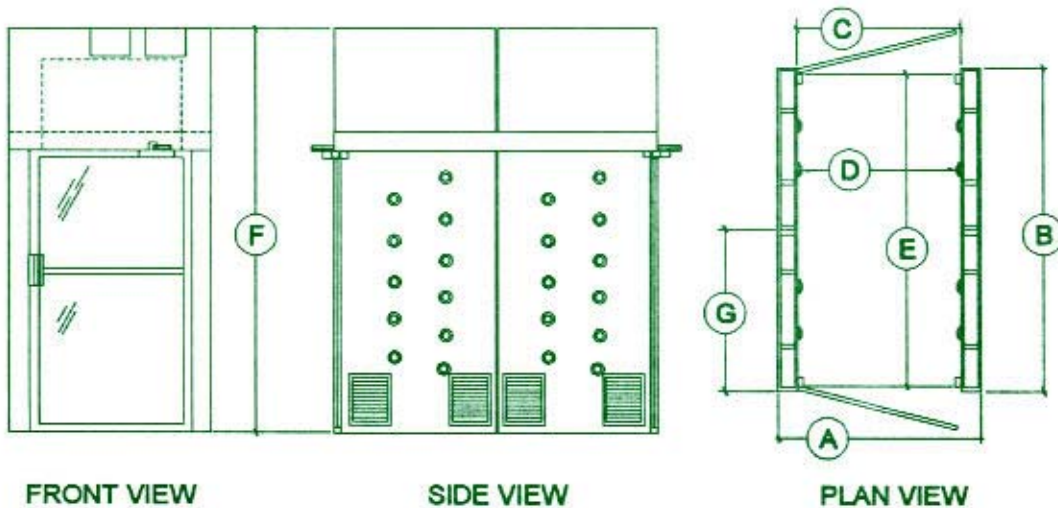
MODEL NUMBER	TN48120	TN60120	TN48144	TN60144	TN48180	TN60180	TN48240
WIDTH (A)	48"	60"	48"	60"	48"	60"	48"
LENGTH (B)	120"	120"	144"	144"	180"	180"	240"
DOOR WIDTH (C)	36"	36"	36"	36"	36"	36"	36"
INTERIOR NET WIDTH* (D)	36"	48"	36"	48"	36"	48"	36"
INTERIOR NET LENGTH ** (E)	116"	116"	140"	140"	176"	176"	236"
EXTERIOR HEIGHT (F)	119"	119"	119"	119"	119"	119"	119"
NUMBER OF NOZZLES	72	72	72	72	108	108	144
BLOWER HP	5	5	5	5	5	5	5
NUMBER OF BLOWERS	2	2	2	2	3	3	4
BLOWER CFM @ SYSTEM STATIC	1500	1500	1500	1500	1500	1500	1500
MOTOR FLA @ 208-230 VAC 3 PHASE***	13	13	13	13	13	13	13
MOTOR FLA @ 440-480 VAC 3 PHASE ***	6.5	6.5	6.5	6.5	6.5	6.5	6.5
APPROXIMATE SHIPPING WEIGHT	3650	3800	4350	4600	5475	5700	7300

* FROM FACE OF WALL TO FACE OF WALL EXCLUDING PROTRUSIONS OF NOZZLES AND GRILLES

** FROM FACE OF DOOR TO FACE OF DOOR EXCLUDING PUSH BARS

***PER BLOWER MOTOR

SPECIAL NOTE: VLF OPTION ADDS 6" TO EXTERIOR HEIGHT



AVAILABLE OPTIONS

ADDITIONAL EMERGENCY STOP STATIONS
 AUDIBLE ALARM
 SPECIAL SIZE DOORS
 PASSAGE LATCH FOR DOORS
 ALUMINUM HONEYCOMB CONSTRUCTION

GAUGES FOR FILTERS
 VFD DRIVES (FOR BLOWER)
 VLF (LAMINAR FLOW CEILING)
 PAINTED STEEL CONSTRUCTION
 304 STAINLESS STEEL CONSTRUCTION